



Alero™



adjustability and support

# Alero™

Alero combines comfort and performance with exceptional value and design.

In today's modern office where computer related activities are crucial, it is extremely important that one's choice in seating encourages comfort and productivity. Alero's fully upholstered or breathable mesh back and comfortable padded seat create the perfect blend of comfort and design. Many adjustable features and a choice of functional mechanisms ensure the chair will perform well. Choose a sophisticated Multi-tilter for computer intensive activities or a tilter chair for casual offices or meeting rooms. All chairs feature an adjustable lumbar support that allows the user to customize the comfort of the back.



1960-2 High Back Knee-Tilter with adjustable Headrest, shown in GIG GIG1 Stone



1961-2 High Back Knee-Tilter (no Headrest), shown in GIG GIG1 Stone. Also, shown on cover in Momentum OHS Warmth OH12



1966-4 Upholstered High Back Tilter with adjustable Headrest, shown here and on cover in Sprinkle S104 Copper



# Alero™

## Details



**Headrest** is height and angle adjustable to suit your personal preferences.



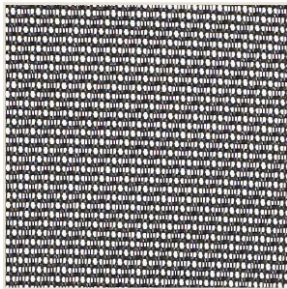
**Arms** are height adjustable and feature a "sliding armcap" that can be moved forward and rearward to provide better support for keyboarding.



**Chair frame** Fibre glass reinforced nylon frame is very durable.



**Lumbar** support can be moved up and down. Depth can be adjusted by turning the knob.

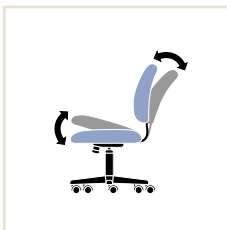


**Back support** is made from elasticized, breathable mesh material that provides comfortable support that contours to your body.

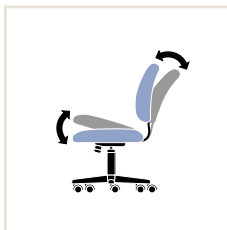


**Standard Base** is fiberglass reinforced black Nylon. Polished aluminum base is optional. **Casters** are available for both carpet or hard surfaces.

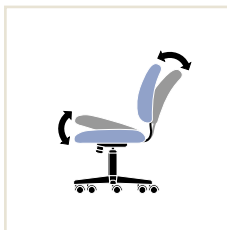
## Ergonomic Features



**Knee-Tilter** Tilt tension adjustment with infinite position tilt-lock control. Seat height adjustment. Manual seat depth adjustment.



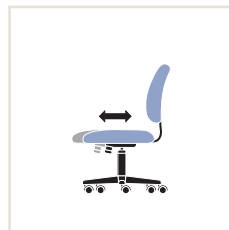
**Multi-Tilter** Back angle adjustment. Infinite tilt-lock control. Tilt tension control. Seat height adjustment. Manual seat depth adjustment.



**Tilt** Rearward tilt with upright position tilt-lock. Tilt tension control. Seat height adjustment. Manual seat depth adjustment.



**Operator** Two lever seat and back angle adjustment. Seat and back adjust independently and lock in any position or free float. Manual seat depth adjustment.



**Task** Manual seat depth adjustment. Seat height adjustment.

# Alero™

DESCRIPTION	DIMENSIONS			SEAT HEIGHT
	W	D	H	
	IN	IN	IN	

	W	D	H	SEAT HEIGHT
	IN	IN	IN	IN
	mm	mm	mm	mm



<b>1960-2</b>	25	24.5	48.5	16-20
	635	622	1232	406-508

**High Back Knee-Tilter with adjustable Headrest.** Sliding soft urethane (GL) armcaps. Tilt-tension adjustment with infinite position tilt-lock control. Pneumatic seat height adjustment with height/depth adjustable lumbar support. Manual seat depth adjustment.

**1966-2** As above except with fully upholstered back.



<b>1960-3</b>	25	24.5	48.5	16.5-20.5
	635	622	1232	419-521

**High Back Multi-Tilter with adjustable Headrest.** Sliding soft urethane (GL) armcaps. Back angle adjustment. Tilt-tension adjustment with infinite position tilt-lock control. Pneumatic seat height adjustment with height/depth adjustable lumbar support. Manual seat depth adjustment.

**1966-3** As above except with fully upholstered back.



<b>1960-4</b>	25	24.5	48.5	16.5-20.5
	635	622	1232	419-521

**High Back Tilter with adjustable Headrest.** Sliding soft urethane (GL) armcaps. Back angle adjustment. Tilt-tension adjustment with upright position tilt-lock control. Pneumatic seat height adjustment with height/depth adjustable lumbar support. Manual seat depth adjustment.

**1966-4** As above except with fully upholstered back.



<b>1961-2</b>	25	24.5	40	16-20
	635	622	1016	406-508

**High Back Knee-Tilter (no Headrest).** Sliding soft urethane (GL) armcaps. Tilt-tension adjustment with infinite position tilt-lock control. Pneumatic seat height adjustment with height/depth adjustable lumbar support. Manual seat depth adjustment.

**1967-2** As above except with fully upholstered back.



<b>1961-3</b>	25	24.5	40.5	16.5-20.5
	635	622	1029	419-521

**High Back Multi-Tilter (no Headrest).** Sliding soft urethane (GL) armcaps. Back angle adjustment. Tilt-tension adjustment with infinite position tilt-lock control. Pneumatic seat height adjustment with height/depth adjustable lumbar support. Manual seat depth adjustment.

**1967-3** As above except with fully upholstered back.

DESCRIPTION	DIMENSIONS			SEAT HEIGHT
	W	D	H	
	IN	IN	IN	

	W	D	H	SEAT HEIGHT
	IN	IN	IN	IN
	mm	mm	mm	mm



<b>1961-4</b>	25	24.5	40.5	16.5-20.5
	635	622	1029	419-521

**High Back Tilter.** Sliding soft urethane (GL) armcaps. Back angle adjustment. Tilt-tension adjustment with upright position tilt-lock control. Manual seat depth adjustment.

**1967-4** As above except with fully upholstered back.



<b>1961-5</b>	25	24.5	40.5	16.5-20.5
	635	622	1029	419-521

**High Back Operator.** Sliding soft urethane (GL) armcaps. Pneumatic seat height adjustment with height/depth adjustable lumbar support. Manual seat depth adjustment.

**1967-5** As above except with fully upholstered back.



<b>1961-6</b>	25	24.5	41	17-22
	635	622	1041	432-559

**High Back Task.** Sliding soft urethane (GL) armcaps. Pneumatic seat height adjustment with height/depth adjustable lumbar support. Manual seat depth adjustment.

**1967-6** As above except with fully upholstered back.



<b>1962</b>	25	24.5	40	17.5
	635	622	1016	445

**Armchair.** Black tubular steel cantilever base. Fixed height "T" arms with soft urethane armcaps.

**1968** As above except with fully upholstered back.



<b>1963</b>	19.5	24.5	40	17.5
	495	622	1016	445

**Armless side chair.** Black tubular steel cantilever base.

**1975** As above except with fully upholstered back.

All models are available in Leather or Leather/Mock Leather. Add "LM" after first 4 digits of model #. See Price List for details.

Petite Seat Size is now available on all models. Check the current Price List for a complete listing of these models, as well as, a complete listing of all models available.



**Global - Canada, The Global Group**  
1350 Flint Rd., Downsview ON Canada M3J 2J7  
Sales & Marketing: Tel (1-877) 446-2251  
Customer Service: Fax (800) 361-3182  
Government Customer Service: Fax (416) 739-6319

**Global - U.S.A.**  
17 West Stow Road P.O. Box 562  
Marlton New Jersey U.S.A. 08053  
Tel (856) 596-3390 (800) 220-1900  
Fax (856) 596-5684

**Global - International**  
560 Supertest Road Downsview  
Ontario Canada M3J 2M6  
Tel (416) 661-3660 (800) 668-5870  
Fax (416) 667-1821

**GGI Office Furniture (UK) Ltd.**  
Global Way Darwen  
Lancashire UK BB3 0RW  
Tel +44(0) 1254 778500  
Fax +44(0) 1254 778519



Visit us on the World Wide Web at [www.globaltotaloffice.com](http://www.globaltotaloffice.com) Offices throughout Canada, United States, United Kingdom, France, Australia and Brazil. Distribution around the world. A member of the Global Group. © 2012 ©™ Trade-Marks of GLOBAL TOTAL OFFICE. These products may be covered by one or more issued patents or pending patent applications in Canada, the U.S. and elsewhere. All intellectual property rights in applicable trademarks, patents and industrial designs are strictly reserved. Made in Canada. Specifications are correct at time of printing. Printed in Canada. Creative / Global Group Design Center 210612 12.0184